

Export Data from K100-TB to PC

Please download the software "DMS(Data management software)" for K100-TB. With the software (DMS), customer easily download DATA from device to PC.

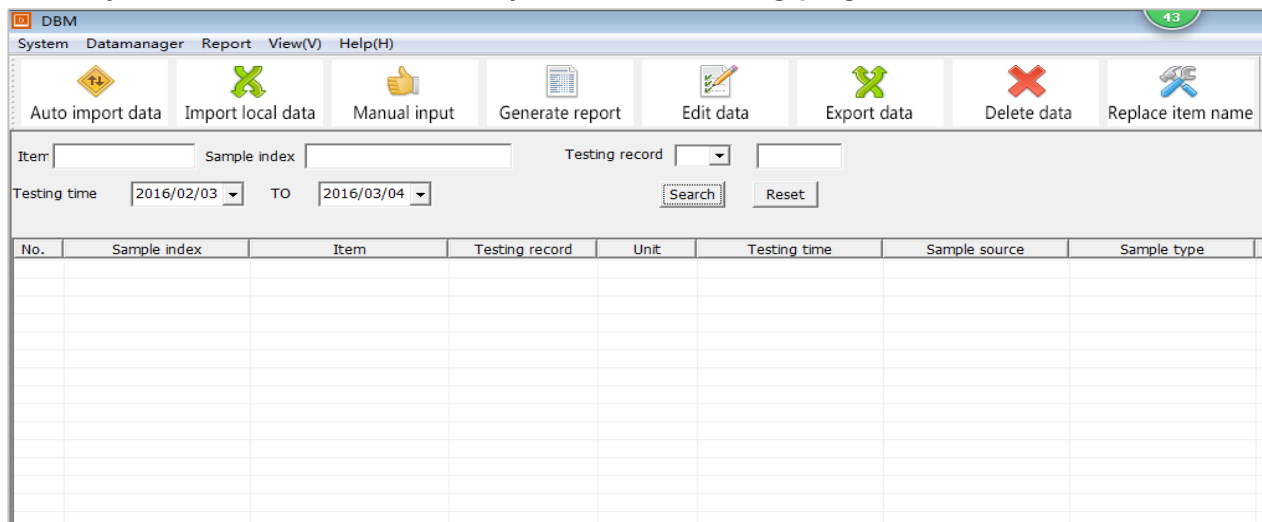
1. Please check the following circumstance.

- Device: K100-TB body, USB Cable connector, DMS software
- PC Circumstance: Window XP, Window 7, Window 10

2. Unpack the downloaded DMS compressed file and run the file DBMON.exe

bin	2016/3/3 17:45
templete	2016/3/3 17:53
.DS_Store	2016/1/18 18:01
dataExporten.dll	2016/3/3 17:44
DataSearcher.dll	2016/3/3 17:45
DBMEN.exe	2016/3/3 17:44
libxl.dll	2015/12/25 15:53
USBConnect.dll	2016/3/2 15:29

3. When you run the file "DBMON.exe", you can see following program.



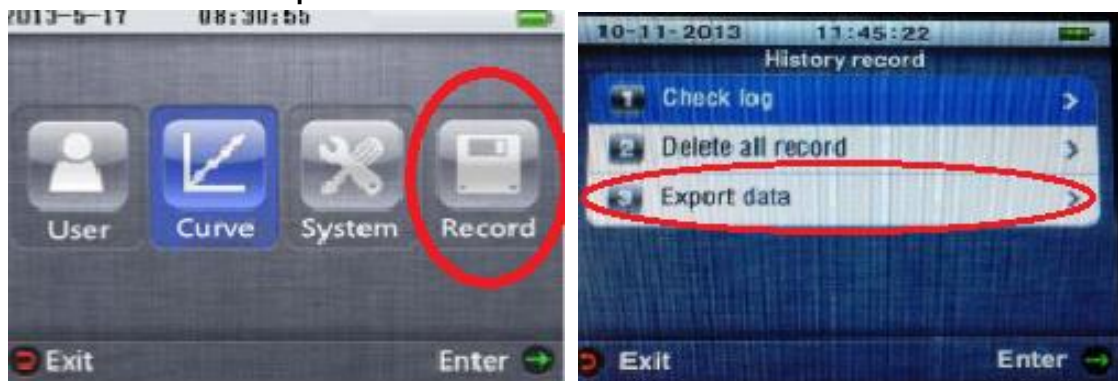
No.	Sample index	Item	Testing record	Unit	Testing time	Sample source	Sample type

4. Connect USB Cable between PC and device.

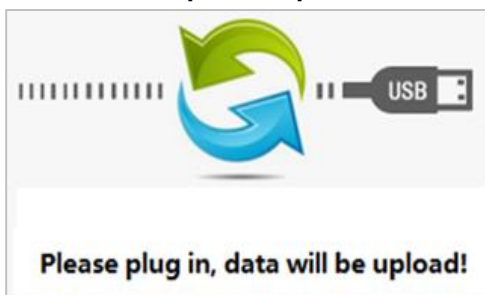


5. Operate device according to following steps.

Menu -> Record -> Export data

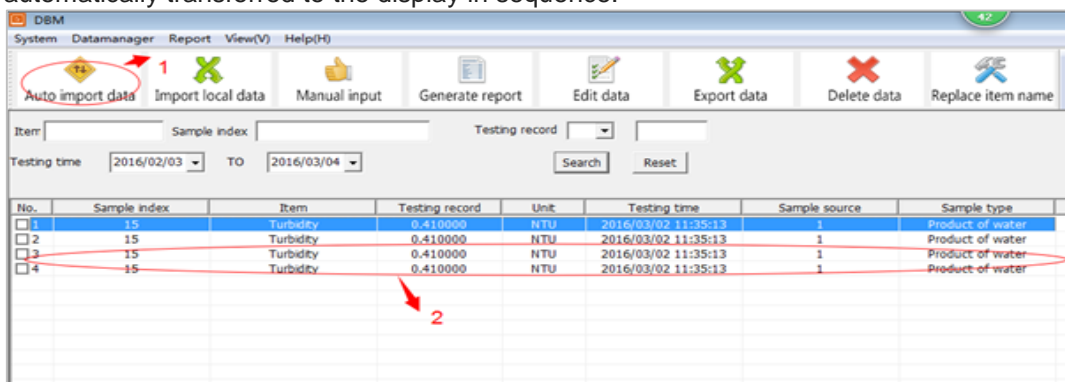


6. Once the setup is complete, the following screen is displayed.



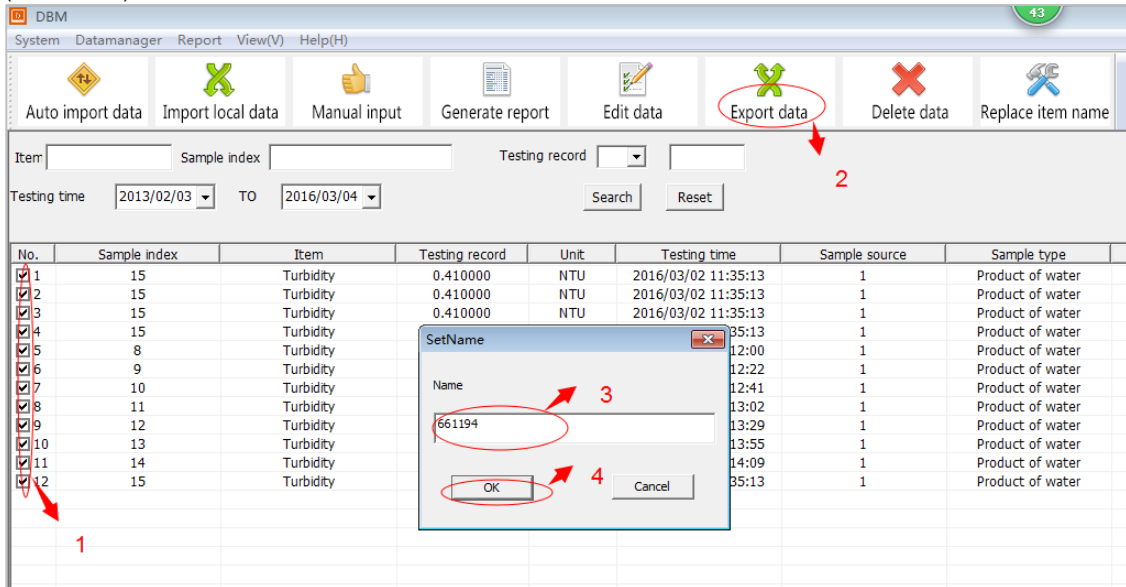
7. Get automatic data downloading from device to PC (Device to PC program)

When you click the **Auto import data** from the DMS program, Data stored in the unit is automatically transferred to the display in sequence.



8. Storing data in the program as an Excel file. (Program to Excel)

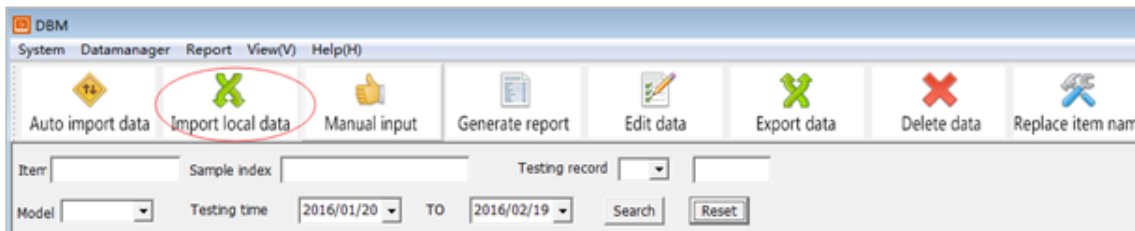
Select the item from No. from the list DMS program. (Place the cursor in and press the right mouse button, you can select the entire entry at a time.)
 After selection, click **Export data** to determine the storage location and set the file name (SetName).



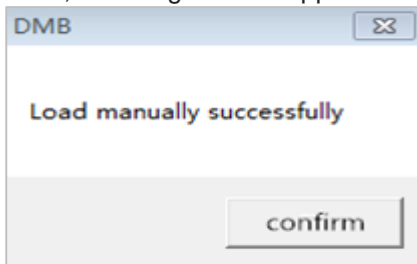
Once the setup is complete, open the window **Export data successfully**, press the OK button to complete the excel file storage.

9. Importing files from the computer to the Data management software.(Excel to Program)

When you select the **Import local data** from Data management software for PC (laptop) you can import data files from the computer to the Data management software.



Files stored on a computer must be an Excel file types stored from Data management software. Then, following window appears on your computer, press OK for the import data.



4) Manual input

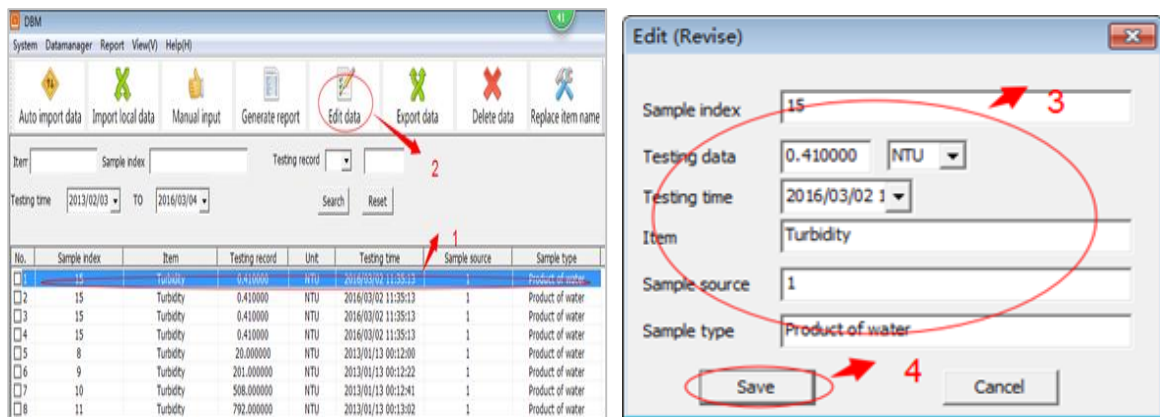
Not available.

5) Generate report

Not available.

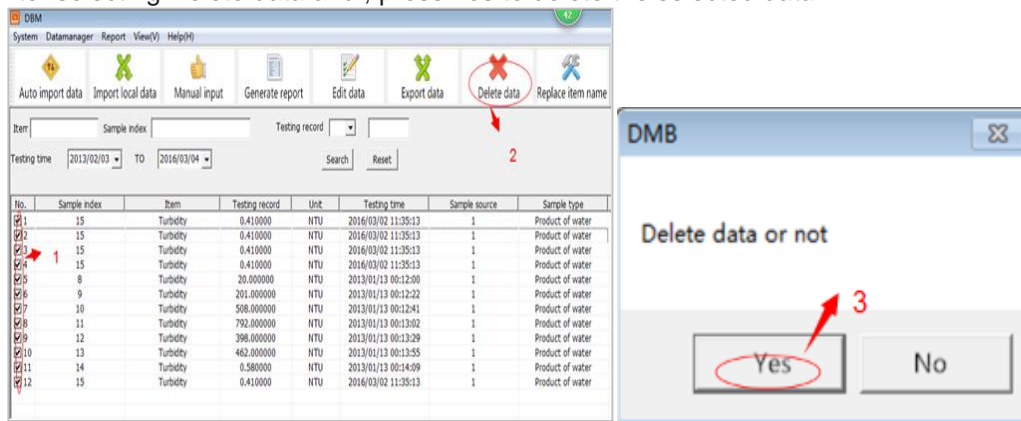
6) Editing data

Choose one of the data you want to edit from Data management software for PC (laptop). After selecting the desired item, Edit it and save by pressing the Save button. If you do not want to modify, press the Cancel button..



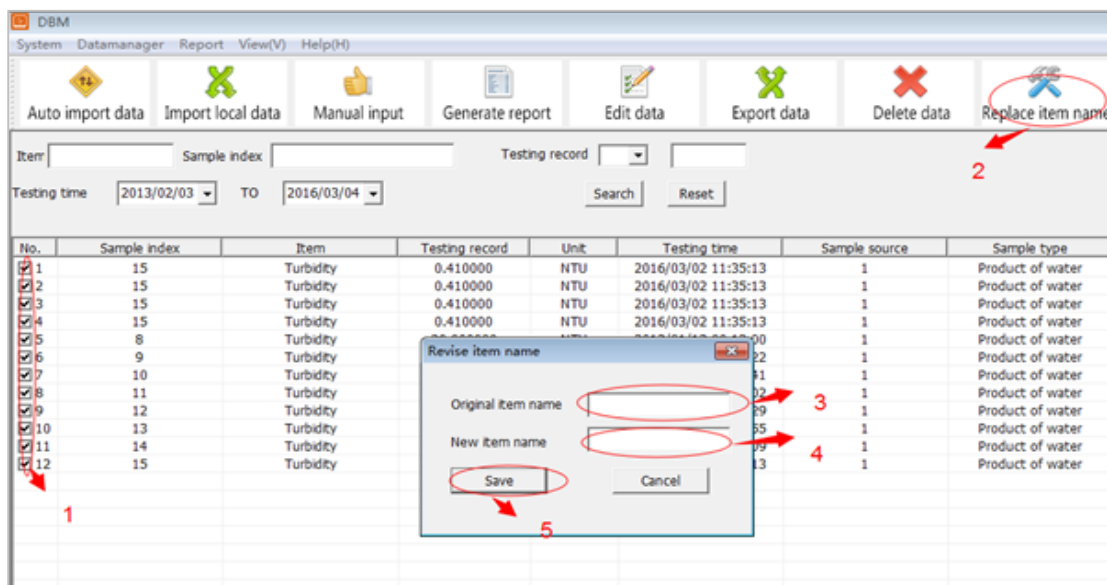
7) Deleting data

Select the desired data from Data management software for PC (laptop). (Place the cursor in and press the right mouse button, you can select the entire entry at a time.) After selecting Delete data and , press Yes to delete the selected data.



8) Replace Item name

Select the desired data from Data management software for PC (laptop).). (Place the cursor in and press the right mouse button, you can select the entire entry at a time.) You can choose or edit an Original item name and a New item name, press Save to preserve the new item name, press Cancel to go back.



9) Search

You can edit "Item", "Sample index", "Testing record", "Testing time" and press "Search" to find out the result, press "Reset" to reset "Item", "Sample index", "Testing record", "Testing time" (The default Testing time is a month)

Note: The default display testing time is a month, when you want to display the earliest data, please edit the "Testing time",press "Search" to obtain the data you needed.

